

Above Dorset &
National
averages in
ALL AREAS
2022



**Holy Trinity C of E
Primary School &
Community Nursey**

A warm welcome to our school.

Dear Parents, Carers and Children,

Welcome to **Holy Trinity Church of England Primary School and Community Nursery.**

We are a **Christian school** where pupils and adults develop the values, knowledge and skills to flourish in our loving care.

Our school values of **Faith, Respect, Harmony** and **Life-long Learning** are embedded in all we do and are made possible by God's love.

We believe that our **Christian vision** and values enrich the development of the whole child as they journey through our school and beyond.

Our school website will give you a flavour of our wonderful school, but if you would like to know more then **please do come and see us!**

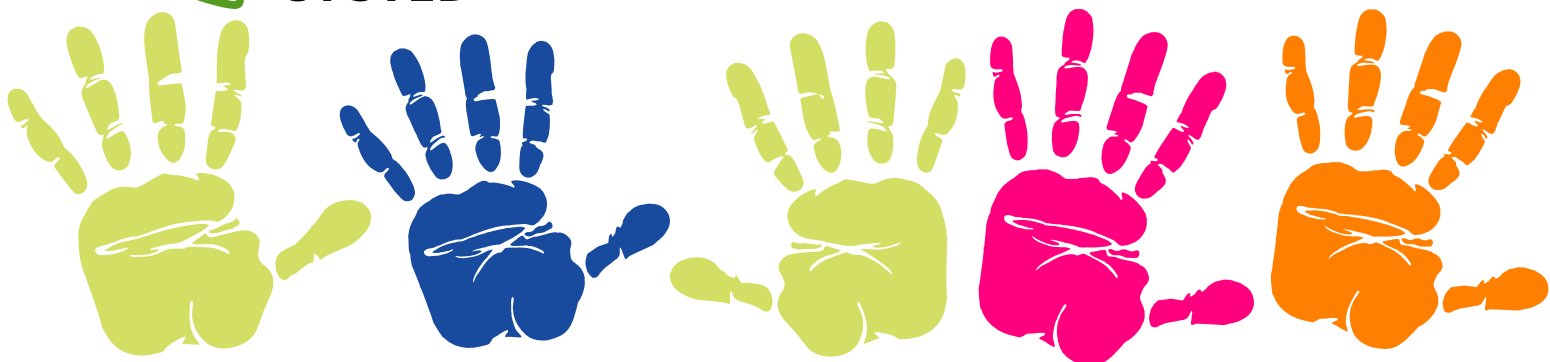
Mrs Fiona Daykin
Headteacher





Pupils' **emotional well-being** is a **priority**.
Additional emotional and social needs are **met effectively** within a well-planned nurture provision.

OFSTED





10 reasons to choose
our school....



Our Christian Vision: Our Learning - Our Journey - Our Future made possible through God's love.

'God is Love'

1 JOHN 4:16

We are a Christian school where pupils and adults know that they are **loved by God**. Our **Christian values** permeate all we are, and all we do - made possible by **God's love** for us.

God wants the very best for His children so that they **flourish**. This belief empowers us to have **high aspirations** and **ambitions** for every adult and pupil in our school.

Our values sustain us on our **journey** through life. When times are difficult we are reminded that **God is with us**. We are dedicated to developing the **values** of **Faith, Harmony, Respect** and **Life-long learning** to equip us **all** to live fulfilling lives.

1. We develop the
'whole' child
to support them
to flourish.



Narrative

Through our journey of life, we strive to follow the values of:

Faith

Faith can move mountains.

MATTHEW 17:20

Harmony

Live in harmony with one another, be sympathetic, love as brothers, be compassionate and humble.

1 PETER 3:8

Respect

Do to others as you would have them do unto you.

LUKE 6:31

Life-Long Learning

I will instruct you and teach you in the way you should go; I will counsel you with my loving eye on you.

PSALM 32:8

Our Curriculum

2. We have high aspirations for all.

We are a school that is dedicated to developing the **knowledge, skills** and **values** for pupils to enable them to live fulfilling lives as **global, national citizens** of the future. We have **high aspirations** for all learners at our school.

We have created a **broad** and **balanced** curriculum to meet the needs of our pupils, enabling them to achieve their full **educational potential** and make **progress** in learning. Lessons are carefully planned to incorporate Rosenshine's principles of instruction, which aims to give children the best possible chance to **know more and remember more**. We are committed to creating learning opportunities, through our curriculum, that are **engaging, challenging** and **fun**. We aim to **inspire** all children by making learning **irresistible!**

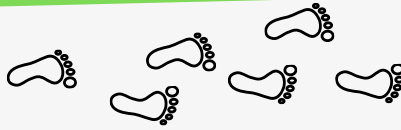
Our curriculum supports the development of the **whole child** and we aim to foster **key values** for life. It is bespoke to our school and for the needs of the learners within it. Using the National Curriculum as the foundation, the children embark upon a journey that not only teaches them about the **big, wide world**, but also about the **importance of our local area** and **loving where we live**.

3. Our curriculum is designed around how children learn best.

#1 Daily Review



Daily review is an important component in instruction. It helps cement the connections between learned materials. Automatic recall of words, concepts and procedures frees working memory for problem solving and creativity.



Our working memory is small, only handling a few bits of information at once.

Avoid overload: take time to present new material in small steps and proceed only when first steps are mastered.

#2 Small Steps

#3 Questioning



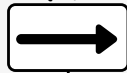
Questioning allows the teacher to determine how well the material is learned and how then to proceed with the next steps.



#4 Provide Models

Students need cognitive support to allow them to solve problems. Modelling, worked examples and teacher thinking out loud clarify the steps and reduce load on working memory.

#5 Guide Student Practice



Students need more time to rephrase, elaborate & summarise new material. Successful teachers build time for this to support greater understanding and better retention into long term memory



More AfL means greater processing, long-term retention & teacher understanding of gaps. Very effective teachers avoid seeking nods from students, instead using targeted questions to explore misconceptions.

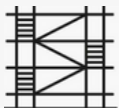
#6 Check Understanding

#7 Obtain High Success Rate

Obtaining a high success rate at each stage of delivery will build solid foundations and avoid entrenching misconceptions. Moving on too quickly will reduce effectiveness and affect students who only recently reached clarity



Scaffolds are temporary supports to assist learning. They can include modelling, teacher thinking aloud, cue cards and checklists. Scaffolds are part of a 'cognitive apprenticeship' leading to competence and independence.



#8 Scaffold Difficult Tasks



#9 Independent Practice

Rigorously monitored practice and overlearning secures success and competence which will automatise recall and reduce load on working memory. Facts, concepts and discriminations will be clear for subsequent learning..

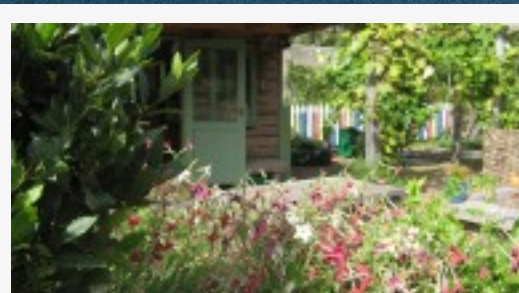
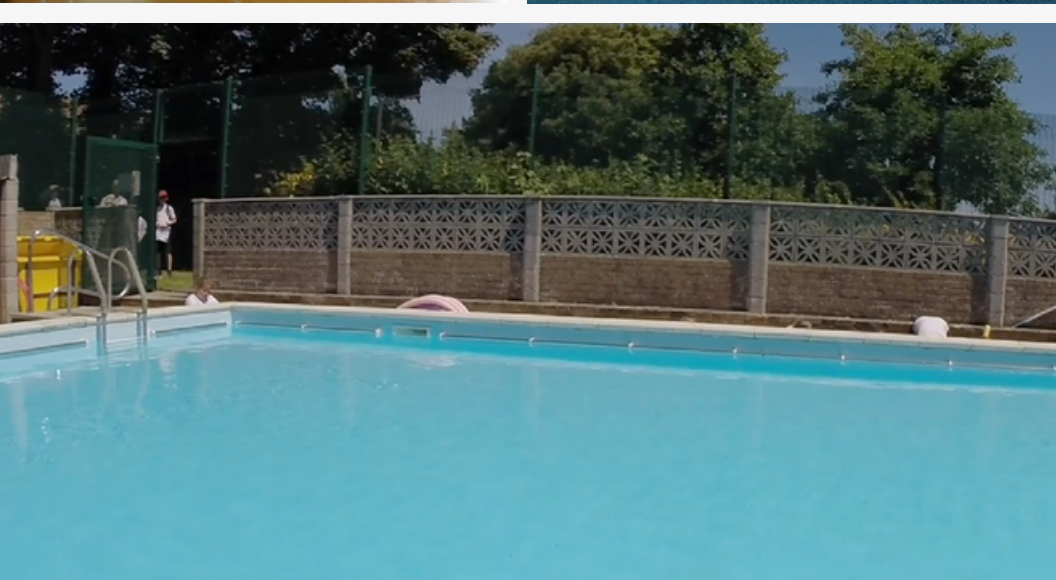
#10 Weekly & Monthly Review



The effort involved in recalling recently-learned material embeds it in long-term memory to develop extensive and available background knowledge.

The more this happens the easier it is to connect new material.

4. Our children love the learning environment.



It speaks for itself!

5. We have amazing staff.
Highly skilled. Dedicated. Welcoming.

Our staff create a supportive and stimulating learning environment where your child will be supported and nurtured to achieve their potential.

I am **super impressed** with the school.... I just wanted to write and let you know you are all doing an **amazing job** and I hope you feel **very proud** of it.

PARENT

Staff provide **good support** for pupils' **personal development** and **welfare**.

OFSTED



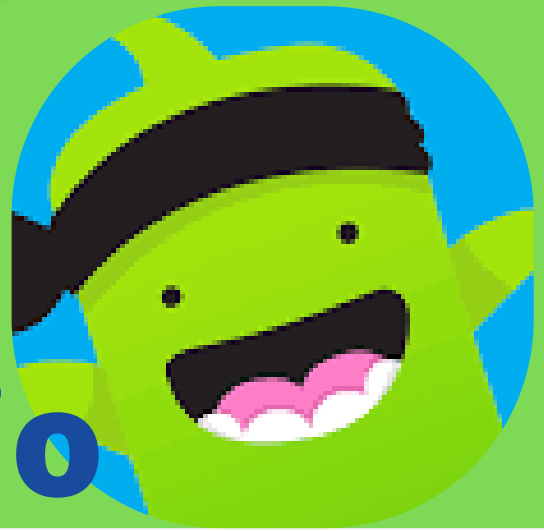
6. We value a positive partnership with parents.



I **love** seeing what is going on in the **classroom**.
Communication with the class teacher is **fantastic!**

PARENT

Class Dojo



7. We are here to develop the whole child and support our families.

Morning skipping & bagels



After School Clubs

Nurture Support

Pupil & Family Support Officer

Breakfast Club

Walking Bus

ELSA Support



8. Our curriculum



goes

beyond!

9. We know how important these first years of education are...



That's why we offer provision for children from 2 years old. That way, transition into the primary age range is seamless!

The children in our **Nursery** and **Reception** classes are provided with a **stimulating learning environment** that encourages learning through **play**, in addition to guided adult-led sessions and **child-initiated learning**. We have excellent, large outdoor provisions for both Nursery and Reception that are exclusively used by our youngest learners in school and allow our children to utilise the **outdoor environment** as well as the indoor setting as much as possible.



10. Our children are happy!

Don't take our word for it...
come and see us!

Contact the school **office** to arrange a visit.

Nothing gives you the **flavour** of a school quite like **seeing it in action.**



Ready to apply?

Applications for a place in Reception are made through the School Admissions Team at Dorset Council via **www.dorsetforyou.com** from September 1st for the following academic year. Contact our school office if you require any assistance to complete your application.





**Holy Trinity Church of England
Primary School & Community Nursery,
Cross Road,
Weymouth,
Dorset.
DT4 9QX**

**Phone:
01305 783200**

**Email:
office@holytrinitypri.dorset.sch.uk**

**Website:
www.holytrinitypri.dorset.sch.uk**

